

# Sinergia<sup>®</sup> clinical case, A digital solution

**Dr. Luis Cuadrado<sup>1</sup> et al,**  
I2 Implantology Clinic  
Manager

**Pedro Pablo Rodriguez<sup>1</sup>,**  
Implantecnic  
Prosthetic laboratory  
Technician

1. Private practice.

## Diagnosis

Patient with advanced periodontal disease and unfavorable diagnosis for teeth 33, 32, 31, 41, 42, 43.



Fig. 1. Intraoperative image of the initial situation.



Fig. 2. Appearance of the gum 72 hours after post-extraction surgery at the moment of placing the temporary prosthesis.

## Treatment plan

Post-extraction surgery of teeth 33, 32, 31, 41, 42, 43. Placement of Phibo<sup>®</sup> TSH 13 mm Series 4 implants following the protocol for standard surgical procedures.

### Phase 1: Temporary restoration.

Digital impression using 3Shape Trios<sup>®</sup> Sinergia<sup>®</sup> with Phibo<sup>®</sup> Library. Immediate loading of TSH implants for instant aesthetics in positions 33, 32, 31, 41, 42, 43, using screw-retained Cronia<sup>®</sup> restoration by Phibo<sup>®</sup> (PMMA elaborated with CAD-CAM technology).

This temporary implant treatment was published in Gaceta Dental 249, July 2013, 218-230.

### Phase 2: Final restoration.

Once the soft tissue had been shaped, an Adhoc<sup>®</sup> by Phibo<sup>®</sup> (Co-Cr manufactured using CAD-CAM technology) restoration was placed on TSH implants by taking a digital impression using Sinergia<sup>®</sup>.

## TEMPORARY RESTORATION:



Fig. 3. Occlusal view of the temporary Cronia<sup>®</sup> restoration by Phibo<sup>®</sup> using Sinergia<sup>®</sup> (published in Gaceta Dental 249, July 2013, 218-230).



Fig. 4. Cronia<sup>®</sup> Bridge on a Sinergia<sup>®</sup> model by Phibo<sup>®</sup>.



Fig. 5. Final view of the occlusion of Cronia<sup>®</sup> prosthesis by Phibo<sup>®</sup> using Sinergia<sup>®</sup>.

## FINAL RESTORATION:



Fig. 6. Occlusal view of the emergency profiles after shaping the soft tissue with Cronia<sup>®</sup> temporary implant bridge by Phibo<sup>®</sup>.

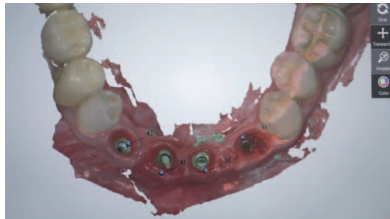


Fig. 7. Preparatory scan performed with 3Shape Trios<sup>®</sup> intraoral scanner.

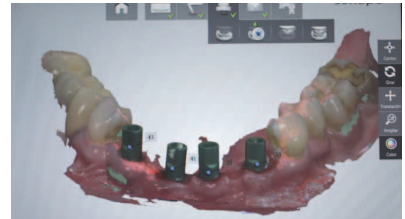


Fig. 8. Scanbodies scanned with 3Shape Trios<sup>®</sup> intraoral scanner using Phibo<sup>®</sup> Library.



Fig. 9. Detailed view of the acanbodies with 3Shape Trios<sup>®</sup> intraoral scanner using Phibo<sup>®</sup> Library.



Fig. 10. Scan of the antagonist performed with the 3Shape TRIOS<sup>®</sup> intraoral scanner, using Phibo<sup>®</sup> Library.



Fig. 11. Patient occlusion using the 3Shape Trios<sup>®</sup> intraoral scanner. Order ready for to be sent to the Sinergia<sup>®</sup> Dental laboratory.



Fig. 12. Occlusal view of Adhoc<sup>®</sup> by Phibo<sup>®</sup> using Sinergia<sup>®</sup>.



Fig. 13. Metal framework try in with Adhoc<sup>®</sup> by Phibo<sup>®</sup> using Sinergia<sup>®</sup>.

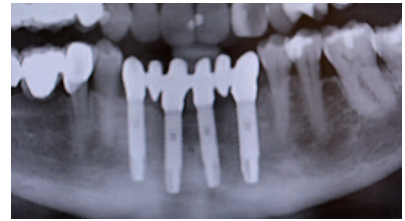


Fig. 14. X-ray of Adhoc<sup>®</sup> by Phibo<sup>®</sup> metal framework try in using Sinergia<sup>®</sup>.



Fig. 15. Adhoc<sup>®</sup> by Phibo<sup>®</sup> final ceramic restoration performed using Sinergia<sup>®</sup>.



Fig. 16. Lateral view of final restoration using Adhoc<sup>®</sup> by Phibo<sup>®</sup> and Sinergia<sup>®</sup>.



Fig. 17. Front view of the patient restored with Adhoc<sup>®</sup> by Phibo<sup>®</sup> using Sinergia<sup>®</sup>.